

Welcome to the transformation of healthcare

Clinical exhaustion, helpless patients and caregivers, skyrocketing costs, too many barriers to accessing care and vastly inequitable health outcomes. This is the reality of global health systems. In the year 2022.



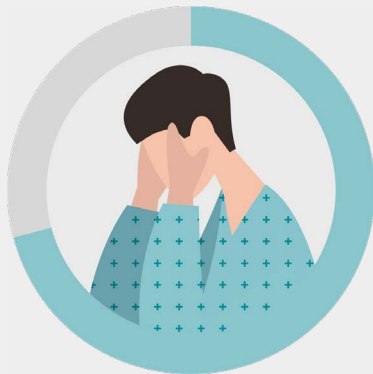
Drivers for change in healthcare



47% of clinicians report feeling symptoms of burnout¹



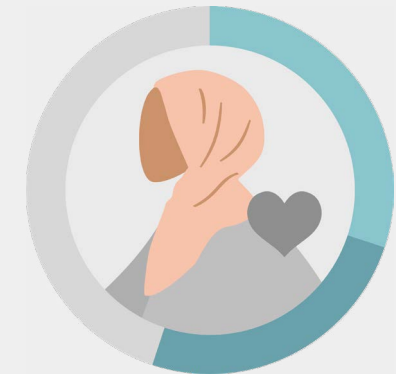
60% of clinicians attribute burnout to bureaucratic tasks such as paperwork²



71% of patients are frustrated with their healthcare experience³



60% of healthcare spend is focused on inpatient & outpatient care⁴



30–55% of a person's health outcomes are determined by social determinants of health⁵

1 <https://www.medscape.com/slideshow/2022-lifestyle-burnout-6014664?reg=1#2>

2 <https://www.medscape.com/slideshow/2022-lifestyle-burnout-6014664?reg=1#4>

3 <https://www.beckershospitalreview.com/healthcare-information-technology/71-of-patients-are-frustrated-with-healthcare-experience-report.html>

4 Conference Paper: Hyojun Park, A., Roubal A., Roubal, B., Rudolph R., Booske C November 2013 Relative contributions of health determinants on health outcomes at the county level Conference: 141st APHA Annual Meeting and Exposition 2013.

5 https://www.who.int/health-topics/social-determinants-of-health#tab=tab_1

The way forward

To make health systems more sustainable we need to achieve the Quintuple Aim. This means addressing clinician burnout, overhauling the patient experience, improving health outcomes, reducing healthcare costs and closing gaps in health equity.⁶



⁶ <http://www.ihl.org/communities/blogs/on-the-quintuple-aim-why-expand-beyond-the-triple-aim>

The key to **success**

By leveraging existing patient engagement technologies and integrating them into a user-friendly hub for people to access 24/7, the healthcare digital front door is poised to support a system redesign for population health management - by providing people with end-to-end access to the health system.



Relieve the burden on clinicians by empowering patients to participate in their care



Leverage AI tools to improve accuracy and triage patients



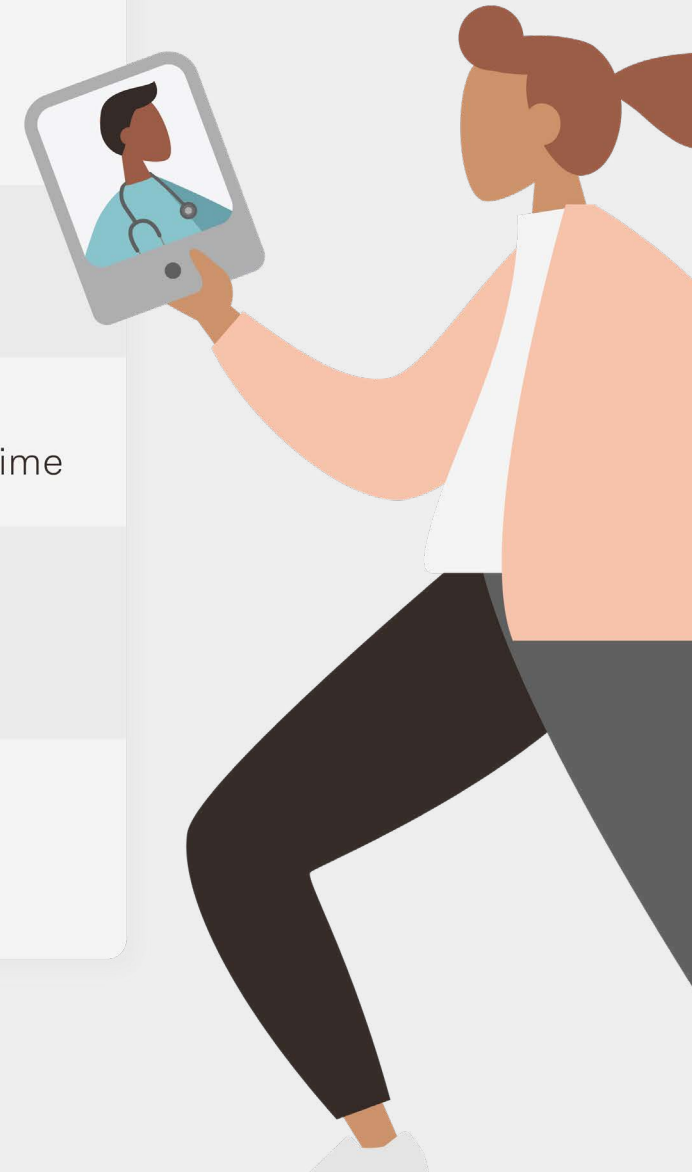
Automate key processes to maximize patient-clinician facetime



Tailor services to the needs of individual populations with language preferences and more



Invest in smart technology that evolves over time and continues to add value



Welcome to healthcare transformed

To put it simply, ensuring the right patients are being seen at the right place and time means clinicians are spending time with those who need it most. Patients and their caregivers can easily interact with the health system when necessary and understand when an intervention is needed. This opens the door to many more positive possibilities and better health outcomes.





Want to learn more about Orion Health's Digital Front Door?
orionhealth.com/global/digital-front-door/